

Notices of Hearing: June 20, 2024
Date of Hearing: July 2, 2024
Date Adopted: July 2, 2024
Date Published: July 11, 2024
Date Effective: July 31, 2024

Resolution 2024 - 09

A RESOLUTION TO AMEND THE CITY’S COMPREHENSIVE PLAN BY ADOPTING A REVISED MAJOR STREET PLAN, A STAKEHOLDER INPUT MAP, AND A REVISED LANDUSE MAP.

WHEREAS Chapter 11-6-14 of South Dakota Codified Law empowers the Planning Commission and City of Council of Harrisburg, SD, to amend the City’s adopted Comprehensive Plan for the physical development of the municipality and the surrounding area; and

WHEREAS the Planning Commission has prepared an amendment to the adopted Comprehensive Plan dated May 15, 2019, has held the required Public Hearing, and has made a recommendation for adoption of the amended Plan to the City Council; and

WHEREAS the City Council has received the recommendation of the Planning Commission, has reviewed the proposed amended Plan, and has held the required Public Hearing; and

WHEREAS the adoption of the amended Comprehensive Plan will assist the City in managing responsible growth and the development of the municipality and the surrounding area.

NOW, THEREFORE, BE IT RESOLVED BY THE CITY OF HARRISBURG, SD:

That the amended Comprehensive Plan for the City of Harrisburg, dated May 15, 2019, be hereby adopted, and shall become effective according to law.

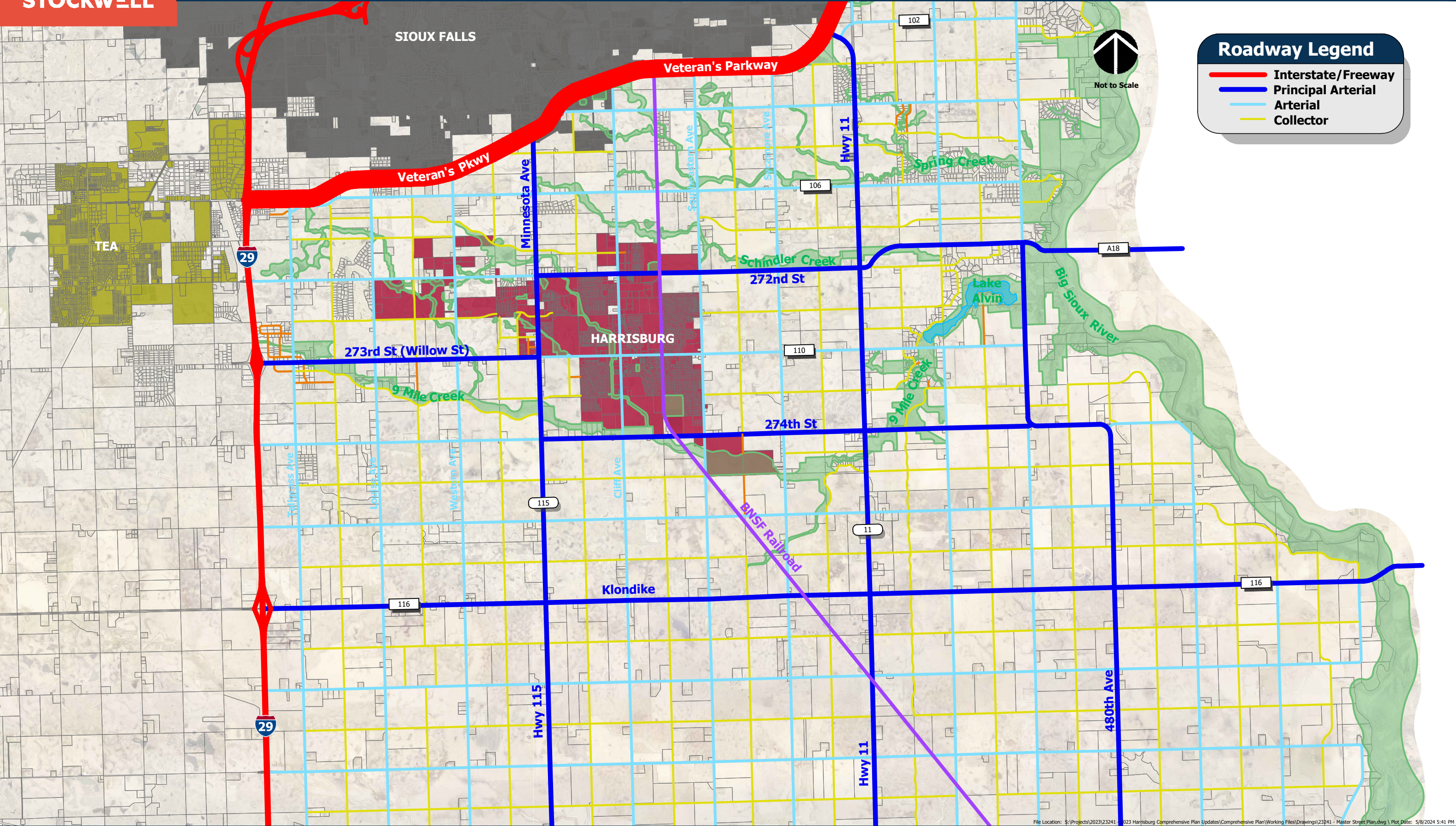
Adopted at Harrisburg, South Dakota, this 2nd day of July, 2024.

COMMON COUNCIL OF THE CITY OF HARRISBURG

Derick Wenck, Mayor

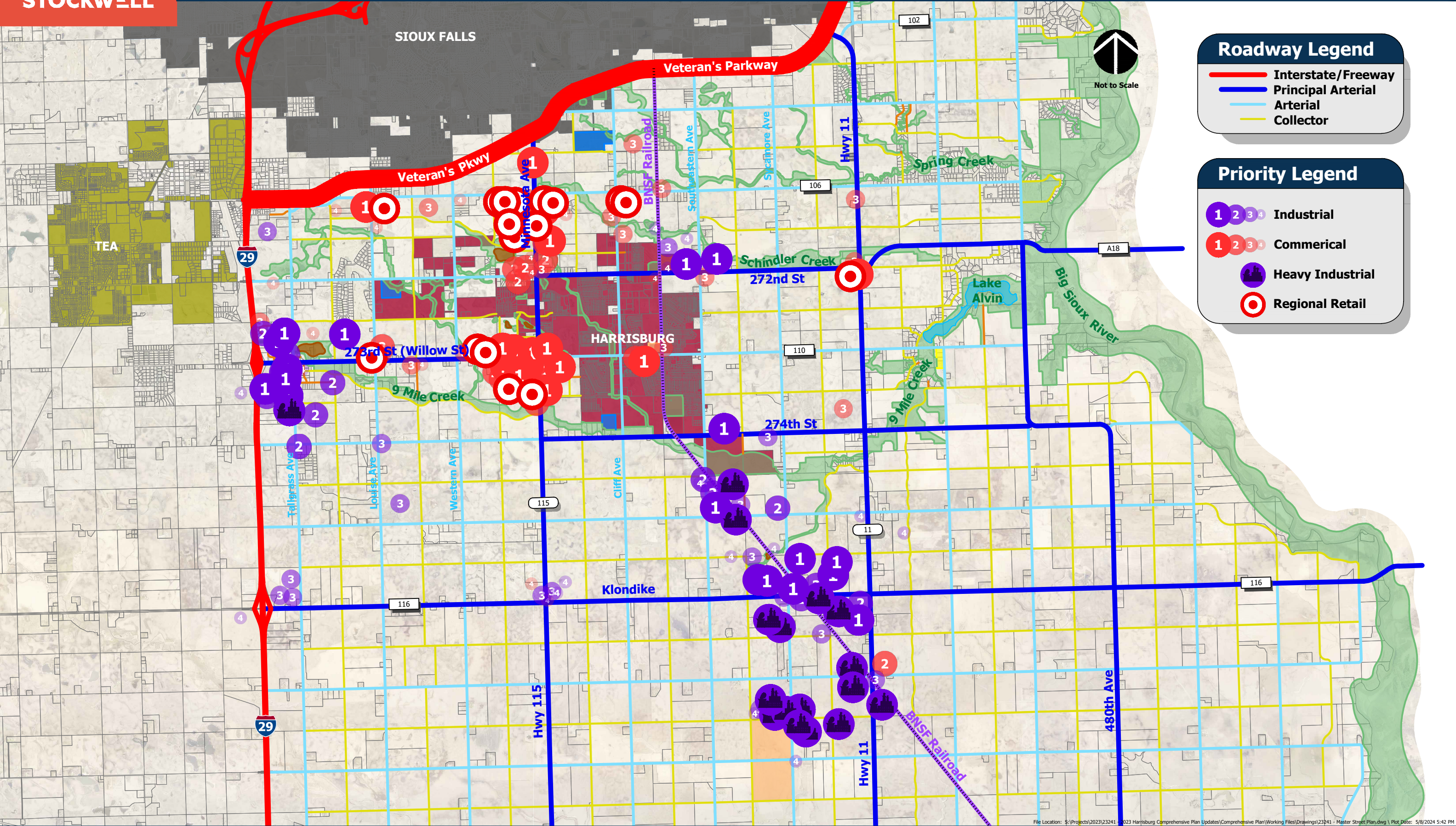
Attest:

Deb Harris, Finance Officer



Roadway Legend

- Interstate/Freeway
- Principal Arterial
- Arterial
- Collector

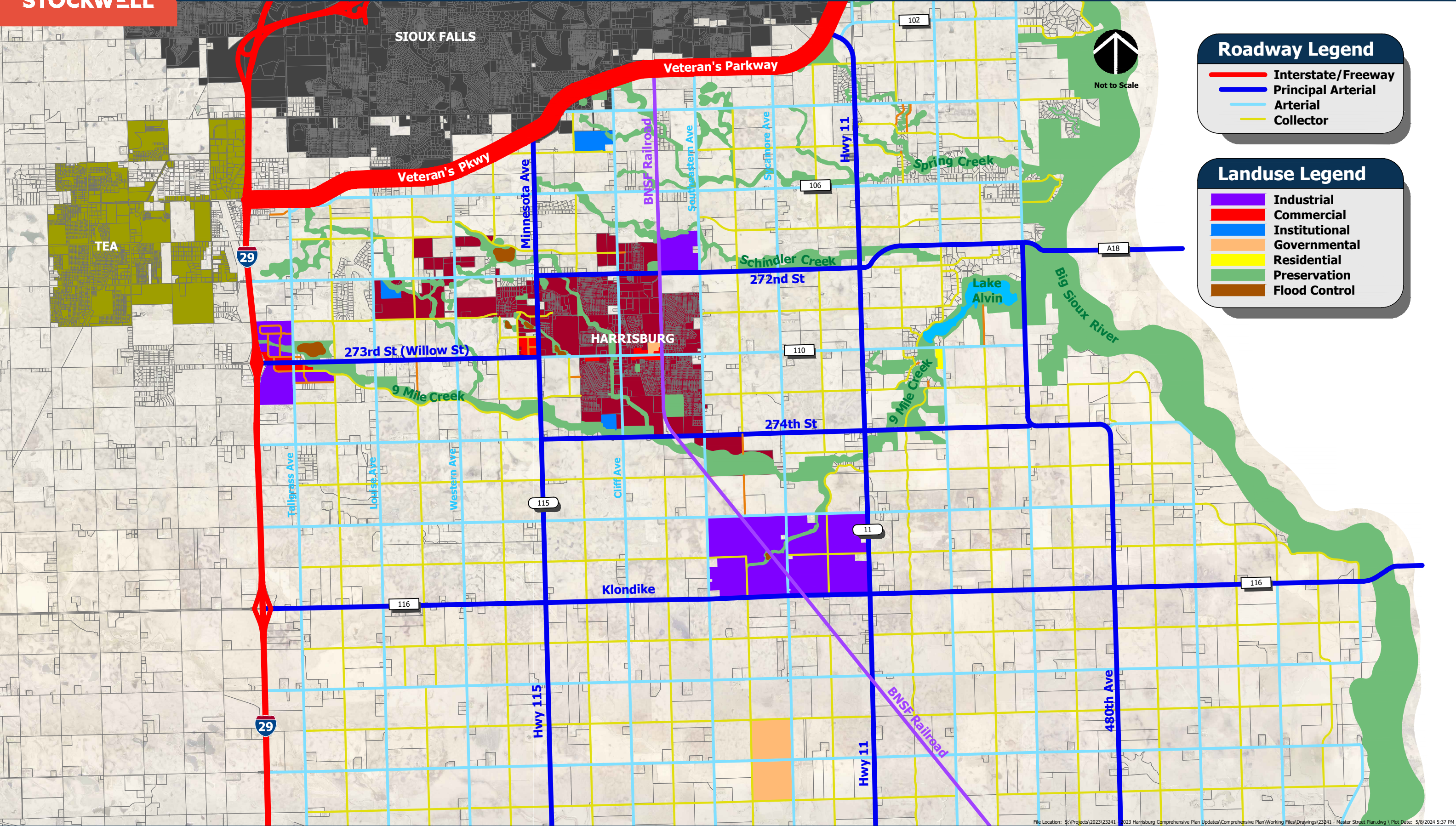


Roadway Legend

- Interstate/Freeway
- Principal Arterial
- Arterial
- Collector

Priority Legend

- Industrial
- Commerical
- Heavy Industrial
- Regional Retail



Roadway Legend

- Interstate/Freeway
- Principal Arterial
- Arterial
- Collector

Landuse Legend

- Industrial
- Commercial
- Institutional
- Governmental
- Residential
- Preservation
- Flood Control

