



17249 | SEI No.

Project Limits | Encl

Andrew Pietrus, City of Harrisburg | Cc

Dan Fink, City of Harrisburg | Cc

April 24, 2018

Re: Harrisburg Street Improvements
E Elm St, E Walnut St & Ivy Lane
City of Harrisburg

Dear Resident / Landowner:

This letter is being written to inform you that an Open House will be held on Thursday, April 26th at 6:00PM at the Legion for the upcoming construction project. The project includes improvements to E Elm St, E Walnut St and Ivy Lane. The Open House will consist of a brief overview and then the public will be able to ask questions or state concerns.

Construction is scheduled to begin Wednesday, May 2nd and shall be substantially complete by June 15th. The City of Harrisburg has awarded the project to Mryl & Roy's Paving, Inc.

During construction, the contractor will maintain access to residents whenever feasible. There will be periods when homeowners will not be able to access their driveways depending on the construction activity at hand or poor weather. During these times residents are asked to use alternative routes and park appropriately as to keep everyone safe.

Attached to this letter is a project limits exhibit which illustrates the boundaries for the project. Below is a summary of work to be completed in each area:

E Elm St:

Work along E Elm St from Grand Avenue to the cul-de-sac will consist of a 4' curb side milling, miscellaneous asphalt patching, miscellaneous concrete, and 2" asphalt overlay, over the entire roadway.

E Walnut St:

Work along E Elm St from Grand Avenue to Perry Lane will consist of a 4' curb side milling, miscellaneous asphalt patching, miscellaneous concrete, and 2" asphalt overlay, over the entire roadway.

Perry Lane:

Improvements along Perry Lane start at Willow Street intersection and continue 100' South. Improvements include removal of asphalt, installation of new 8" water main, miscellaneous concrete, miscellaneous storm sewer improvements, and new asphalt.

Ivy Lane:

Improvements along Ivy Lane from Perry Lane to Willow Street will include removal of asphalt, miscellaneous curb & gutter, installation of new 8" water main, and miscellaneous storm sewer.

You may experience some delays and inconvenienced during this construction period, and we ask for your cooperation and patience. We also request that when driving through or around construction area that you proceed with the highest level of caution in efforts to keep everyone safe. There may be times where you will not be able to access your driveway/garage, at these times we ask you park off site.

Listed below is contact information for this project. Stockwell Engineers will be the onsite engineer representing City of Harrisburg. We ask that if you have any questions, please contact Dexter Mahrt.

Stockwell Engineers, Inc
801 Phillips Ave, Suite 100
(605) 610-6904
dmahrt@stockwellengineers.com



Respectfully submitted,

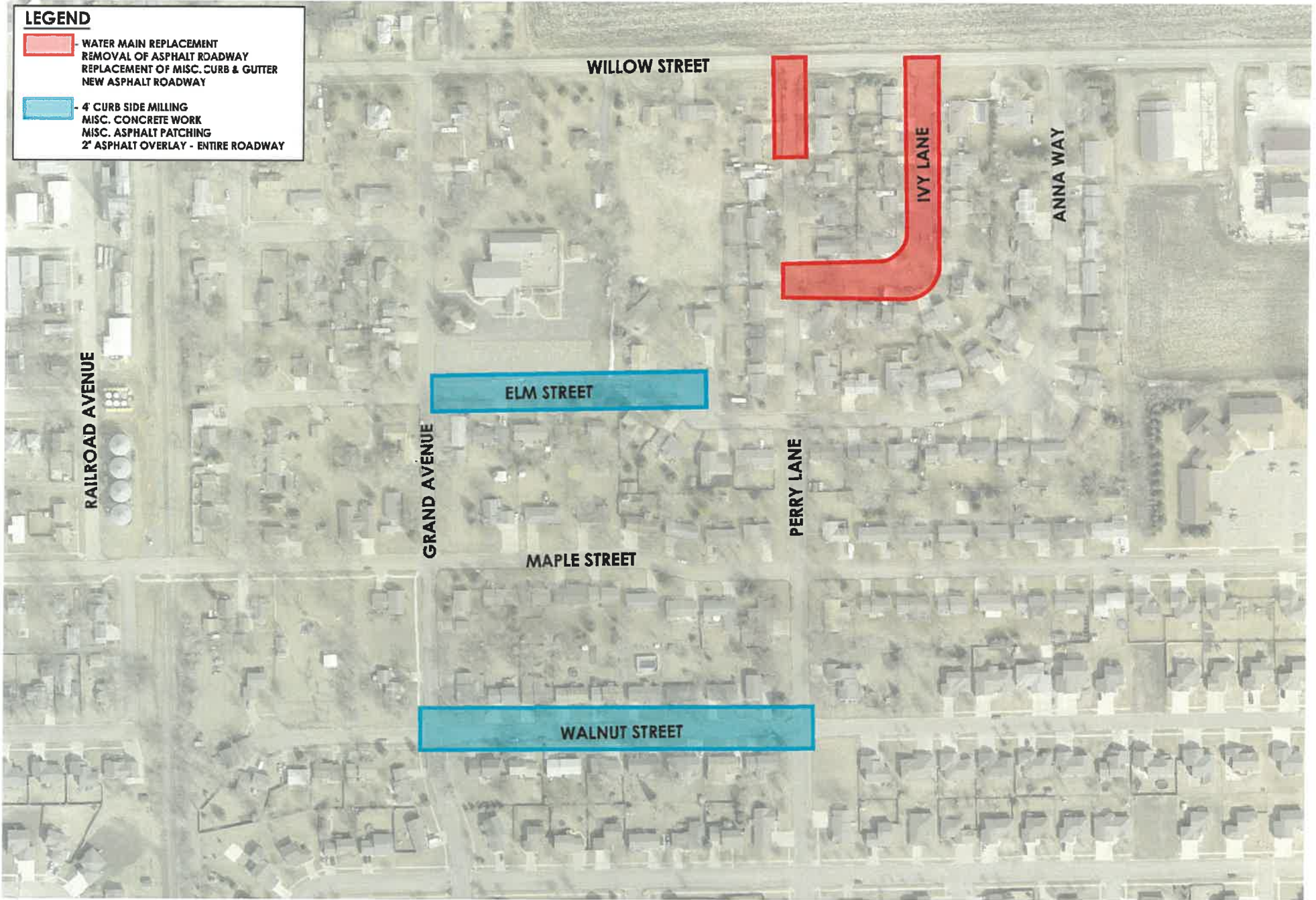
STOCKWELL ENGINEERS, INC.



Dexter Mahrt,
Project Manager

LEGEND

-  WATER MAIN REPLACEMENT
REMOVAL OF ASPHALT ROADWAY
REPLACEMENT OF MISC. CURB & GUTTER
NEW ASPHALT ROADWAY
-  4' CURB SIDE MILLING
MISC. CONCRETE WORK
MISC. ASPHALT PATCHING
2" ASPHALT OVERLAY - ENTIRE ROADWAY



17249 - Proposed Work Areas.dwg

2018 Street & Water Main Improvements
Harrisburg, South Dakota



Scale: 1" = 250'



STOCKWELL
4/24/2018 SEI No: 17249

